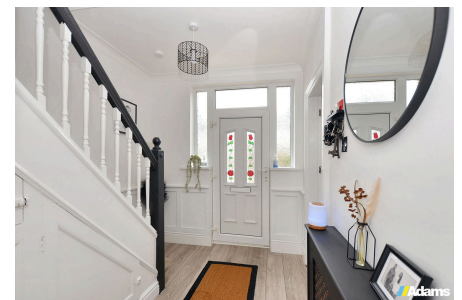


Alexandra Grove, Runcorn

Offers Over £180,000

3 1 1



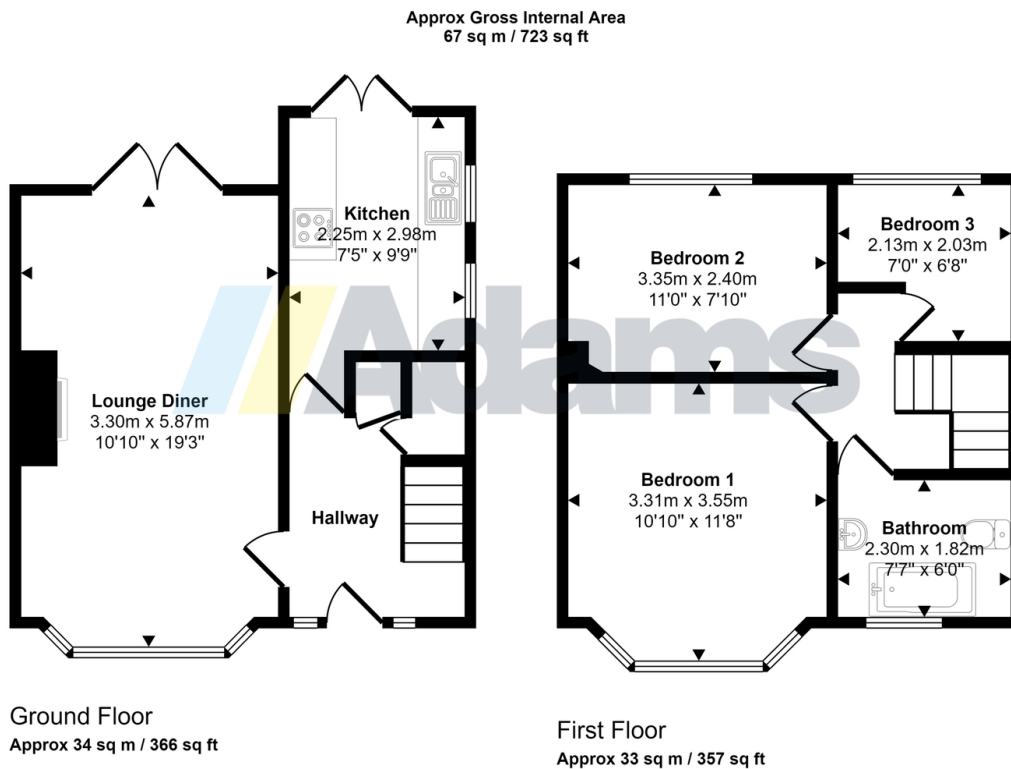
****THREE BEDROOM SEMI IN A PLEASANT HEAD OF CUL-DE-SAC POSITION - MODERN INTERIORS - OFF-ROAD PARKING - LANDSCAPED SOUTH FACING GARDEN****

This beautifully presented three-bedroom semi-detached house, located at the head of a peaceful cul-de-sac, offers the perfect blend of modern living and tasteful décor. Upon entering, you are welcomed by a bright and airy hallway leading to an open-plan lounge diner, providing a versatile space for both relaxation and entertaining. The ground floor also features a modern fitted kitchen, equipped with stylish units and ample storage, making it ideal for culinary

enthusiasts. Every room in this home has been thoughtfully decorated to a high standard, ensuring a move-in-ready experience for the new owners.

Key Features

- Semi-Detached House
- Attractive Fitted Kitchen
- Well Presented Throughout
- Head of Cul-de-sac Position
- Three Bedrooms
- Modern Bathroom
- Landscaped Garden & Driveway
- EPC Rating: D Council Tax Band: B
Tenure: Leasehold



This floorplan is only for illustrative purposes and is not to scale. Measurements of rooms, doors, windows, and any items are approximate and no responsibility is taken for any error, omission or mis-statement. Icons of items such as bathroom suites are representations only and may not look like the real items. Made with Made Snappy 360.