



Partington Square, Sandymoor, WA7 1LW

£315,000

4 3 2



A larger style four bedroom end town house located within the sought after 'Swans Reach' development at Sandymoor.

Features include; entrance hall, cloaks / WC, lounge, kitchen / dining room, first floor with landing, three well proportioned bedrooms, ensuite and family bathroom, plus second floor with landing, impressive dual aspect master bedroom and ensuite.

Outside there is a garden to the rear, driveway parking and a single bay garage.

Early Viewing Advised.

Garage Dimensions - 5.13m x 2.77m (16'10" x 9'1")

Viewing

By prior appointment through our Stockton Heath office on 01925-398343.

Note

All measurements are approximate. No appliances or central heating systems referred to within these particulars have been tested and therefore their working order cannot be verified. Floor plans are for guide purposes only and all dimensions are approximate and are not to be used for room and furniture planning.

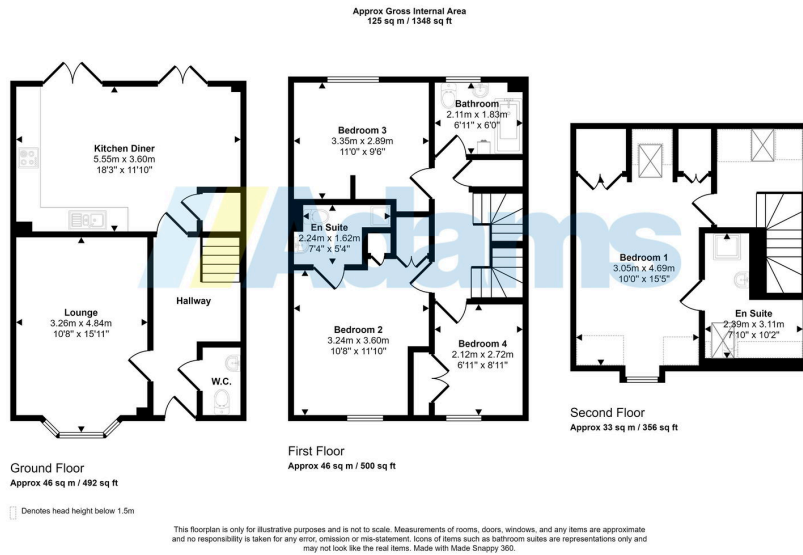
Agents Notes

Tenure: Freehold

Council Tax Band: D

Local Authority: Halton Borough Council





- Large End Town House
- Popular Modern Development
- Four Bedrooms
- Two Ensuites
- Family Bathroom + WC
- Modern Kitchen / Dining Room
- Gas C.H. & D.G.
- Garden At Rear
- Garage & Driveway Parking
- Early Viewing Advised

