



Oldham Street, Warrington, WA4 1ES

£140,000

🛏️ 2 🚿 1 🚪 2



TWO BEDROOM TRADITIONAL TERRACED PROPERTY. SPACIOUS THROUGHOUT. NO ONWARD CHAIN DELAY.

Adams Estate Agents offer to the market this deceptively spacious, two bedroom traditional terraced property, offering an ideal first time buyer or investment opportunity in a popular & convenient Latchford location. In brief, the accommodation comprises; hallway, lounge and kitchen/diner to the ground floor. To the first floor, there are two bedrooms and a four piece bathroom. Exterally, there is an enclosed yard to the rear.

Internal inspection is advised to appreciate what is to offer.

Viewing

By prior appointment through our Stockton Heath office on 01925-398343.

Note

All measurements are approximate. No appliances or central heating systems referred to within these particulars have been tested and therefore their working order cannot be verified. Floor plans are for guide purposes only and all dimensions are approximate and are not to be used for room and furniture planning.

Agent Notes

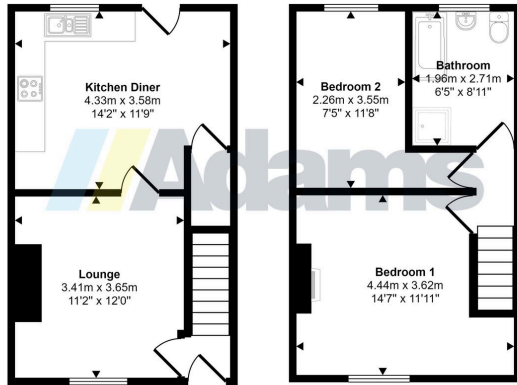
Tenure: TBC

Council Tax Band: A

Local Authority: Warrington Borough Council



Approx Gross Internal Area
64 sq m / 691 sq ft



Ground Floor
Approx 32 sq m / 344 sq ft

First Floor
Approx 32 sq m / 347 sq ft

This floorplan is only for illustrative purposes and is not to scale. Measurements of rooms, doors, windows, and any items are approximate and no responsibility is taken for any error, omission or mis-statement. Icons of items such as bathroom suites are representations only and may not look like the real items. Made with Made Snappy 360.

- Traditional Mid Terrace
- Popular & Convenient Location
- Enclosed Rear Yard
- No Chain Delay
- Two Bedrooms
- Ideal FTB / Investment Location
- Early Viewing Advised



Energy Efficiency Rating		
	Current	Potential
<i>Very energy efficient - lower running costs</i>		
(92 plus) A		
(81-91) B		87
(69-80) C	69	
(55-68) D		
(39-54) E		
(21-38) F		
(1-20) G		
<i>Not energy efficient - higher running costs</i>		
England & Wales	EU Directive 2002/91/EC	