



Raymond Avenue, Stockton Heath, Warrington

£1,650PCM (Deposit: £1,903)

🛏️ 3 🚿 2 🚗 2



Tax Band: D Furnished: Unfurnished

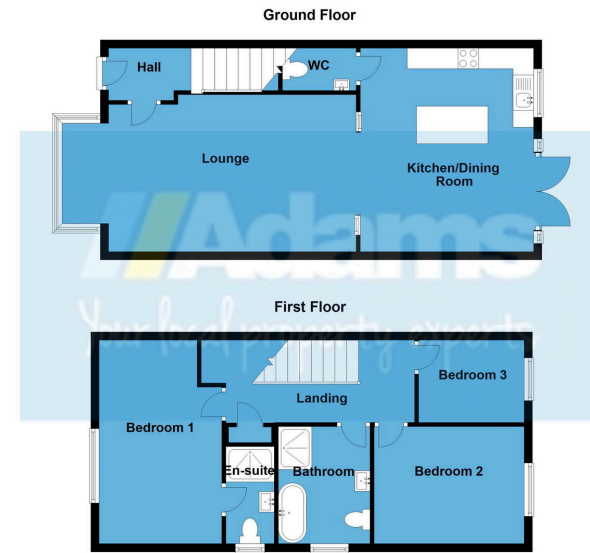
Presented to the market in immaculate condition, this deceptively spacious modern semi offers a fantastic rental opportunity within easy walking distance of Stockton Heath village centre.

Features include; gas fired central heating, UPVC double glazing, entrance hall, a 23ft lounge, open plan kitchen / dining room with integrated appliances, cloaks / WC, a large first floor landing, three well proportioned bedrooms, ensuite, family bathroom, driveway parking for two cars and a pleasant rear garden.

The highly convenient location of this property offers pleasant walks from the doorstep, easy access to several lovely parks, excellent local schooling, all amenities & major transport links.

Early Viewing Essential.





Score	Energy rating	Current	Potential
92+	A		
81-91	B		
69-80	C		80 C
55-68	D	68 D	
39-54	E		
21-38	F		
1-20	G		

www.adamsea.co.uk

RUNCORN

54 High Street, Runcorn, WA7 1AW
 01928 574401
runcorn.lettings@adamsea.co.uk

STOCKTON HEATH

12-14 Walton Road, Stockton Heath, WA4 6NL
 01925 398343
s.heath@adamsea.co.uk

WIDNES

53-55 Albert Road, Widnes, WA8 6JS
 0151 420 4055
widnes.lettings@adamsea.co.uk

Adams is a trading name of Adams Lettings Ltd.
 Registered office 54 High Street, Runcorn, WA7 1AW.
 VAT Registration No. 861 468 406. Registered in England No. 04780963