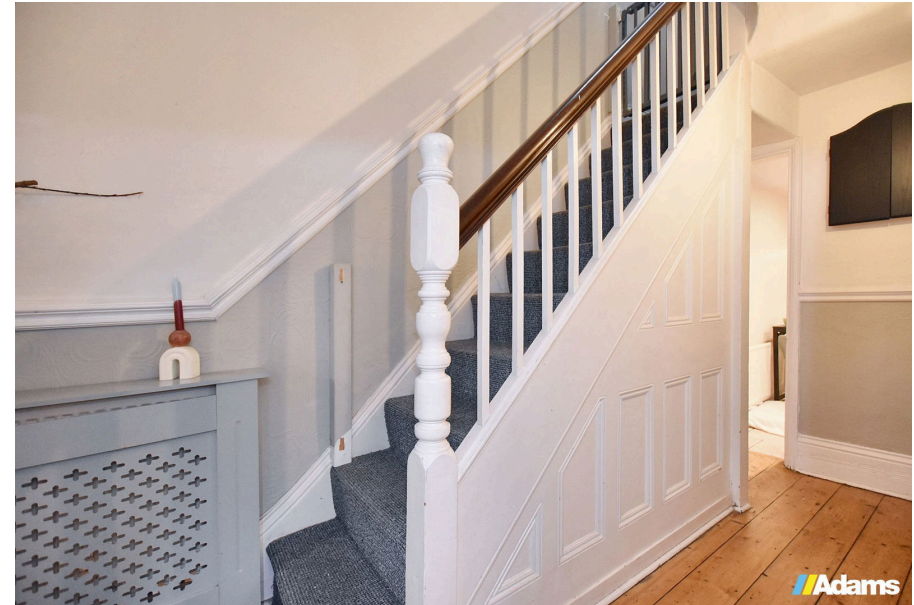




Knutsford Road, Grappenhall, WA4 2PB

Offers Over £325,000

3 1 2



An attractive, larger style bay fronted period terrace located in a prime position on Knutsford Road and offered for sale with the benefit of having 'no chain' delay.

Features of the well presented accommodation include; entrance porch & hall, cellar, open plan lounge / dining room, breakfast kitchen with integrated appliances, utility, WC, first floor landing, three double bedrooms, second floor four piece bathroom and a pleasant South facing courtyard garden at the rear. The large loft area provides useful additional storage & excellent scope for conversion if required / desired (subject to the necessary consents being obtained).

Early Viewing Advised.

Viewing

By prior appointment through our Stockton Heath office on 01925-398343.

Note

All measurements are approximate. No appliances or central heating systems referred to within these particulars have been tested and therefore their working order cannot be verified. Floor plans are for guide purposes only and all dimensions are approximate and are not to be used for room and furniture planning.

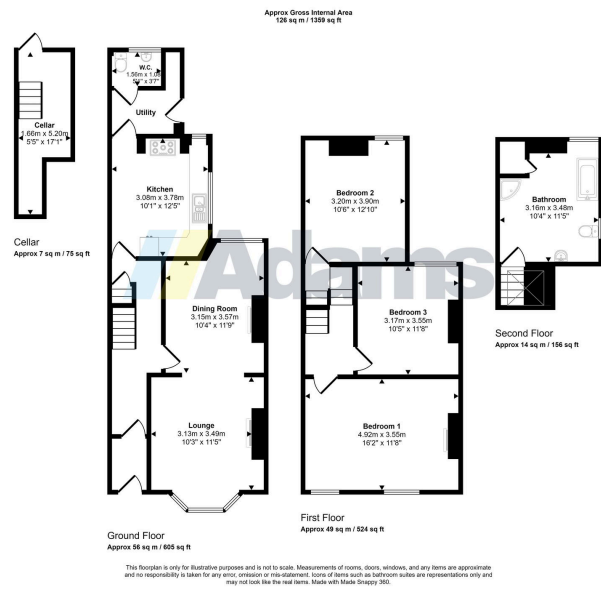
Agents Notes

Tenure: Freehold

Council Tax Band: D

Local Authority: Warrington Borough Council





- Larger Style Period Terrace
- Three Double Bedrooms
- Popular & Convenient Position
- Attractive Period Features
- Open Plan Lounge / Diner
- Breakfast Kitchen
- Utility & Cloaks / WC
- Four Piece Bathroom
- South Facing Rear Garden
- No Chain Delay

