



# Warrington Road, Bartington, Northwich

£375,000

🛏️ 3 🚿 1 🛋️ 2



\*\*\*\*\* DEVELOPMENT OPPORTUNITY \*\*\*\*\*

A substantial detached bungalow standing in large, mature gardens which extend to approximately 0.40 of an acre and offer significant potential for extension / development (subject to the necessary consents being obtained).

The accommodation briefly includes; entrance porch, hall, lounge / dining room, kitchen, utility, three double bedrooms and bathroom. Externally there is a detached single bay garage, driveway parking, several timber storage sheds & lovely mature gardens.

Early Viewing Essential. No Chain Delay With This Sale.

**Viewing**

By prior appointment through our Stockton Heath office on 01925-398343.

**Note**

All measurements are approximate. No appliances or central heating systems referred to within these particulars have been tested and therefore their working order cannot be verified. Floor plans are for guide purposes only and all dimensions are approximate and are not to be used for room and furniture planning.

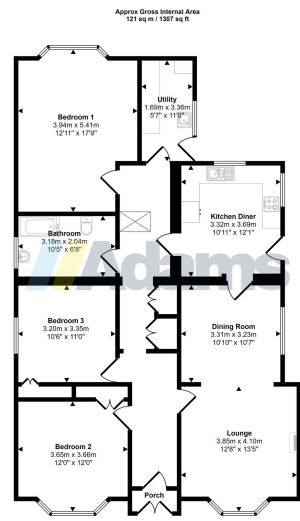
**Agents Notes**

Tenure: TBC

Council Tax Band: E

Local Authority: Cheshire West & Cheshire





Floorplan

This blueprint is only for illustrative purposes and is not to scale. Measurements of rooms, doors, windows, and any items are approximate and no responsibility is taken for any error, omissions or misstatements. Some of items such as bedroom suites are representations only and may not look like the real items. Made with Made Drafty 360.

- Development Opportunity
- Substantial Detached Bungalow
- Approx 0.40 Acre Plot
- Huge Potential To Extend / Redevelop
- Three Double Bedrooms
- Lounge / Dining Room
- Kitchen & Utility Room
- Lovely Mature Gardens
- Garage & Driveway Parking
- No Chain Delay

