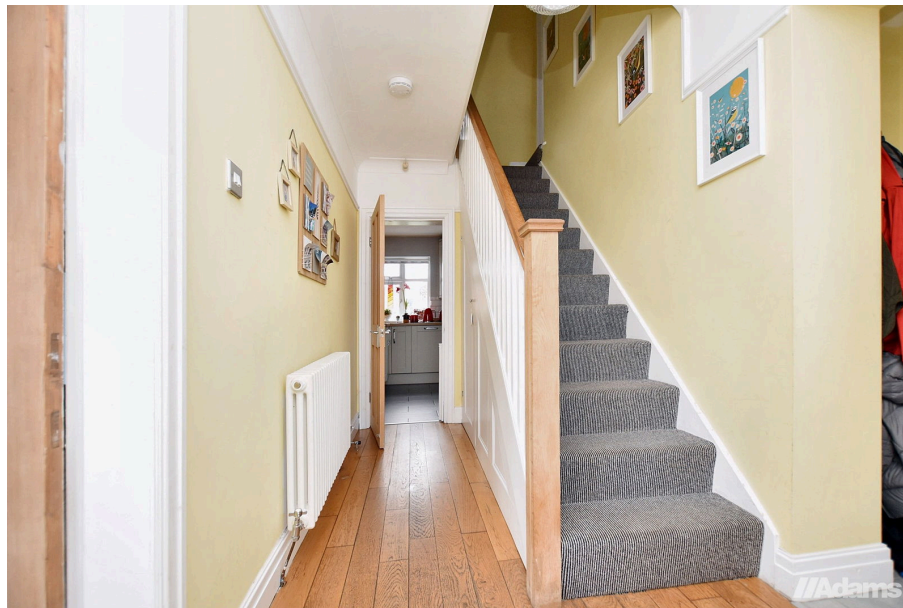




Ackers Lane, Stockton Heath WA4 2BZ

£550,000

🛏️ 4 🚿 2 🚻 2



**FOUR BEDROOM EXTENDED SEMI-DETACHED FAMILY HOME.
IMMACULATELY PRESENTED THROUGHOUT.**

Adams Estate Agents are delighted to offer to market this attractive, extended, period semi-detached home within easy walking distance of Stockton Heath village. This superb, recently renovated family home must be viewed to be fully appreciated. The spacious accommodation comprises entrance hallway, formal lounge, shower room, utility and large kitchen diner with lounge area on the ground floor. To the first floor, there are four well appointed large bedrooms and a modern family bathroom. Outside, the substantial driveway provides off road parking at the front and the rear benefits from a large patio area, extensive lawn and a fantastic garden room.

By prior appointment through our Stockton Heath office on 01925-398343.

Note

All measurements are approximate. No appliances or central heating systems referred to within these particulars have been tested and therefore their working order cannot be verified. Floor plans are for guide purposes only and all dimensions are approximate and are not to be used for room and furniture planning.

Agents Notes

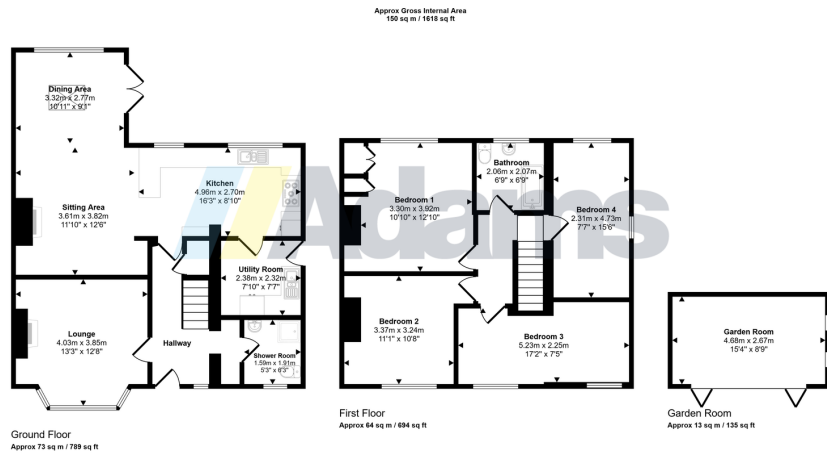
Tenure: Leasehold

Council Tax Band: D

Local Authority: Warrington Borough Council

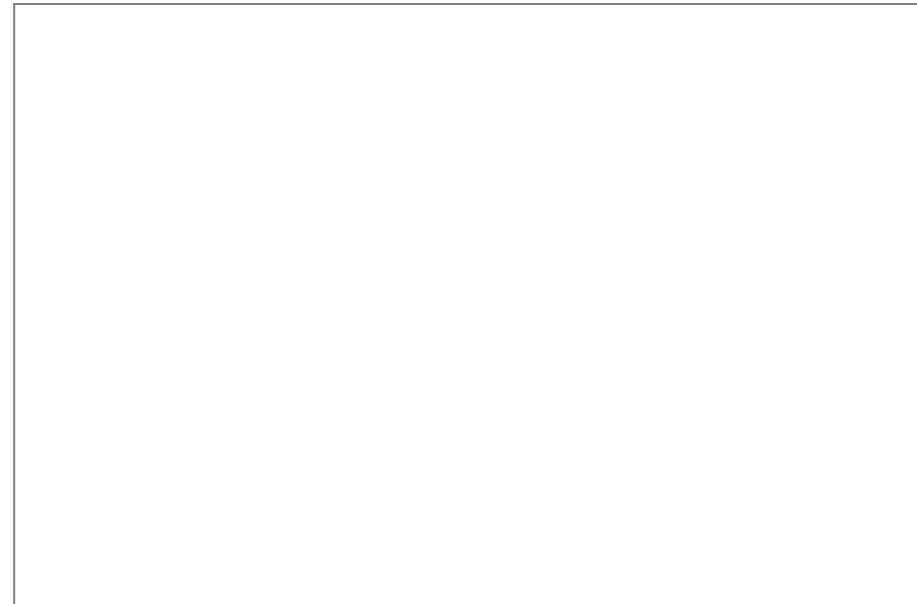
EPC Rating: tbc





This floorplan is only for illustrative purposes and is not to scale. Measurements of rooms, doors, windows, and any items are approximate and no responsibility is taken for any error, omission or misstatement. Icons of items such as bathroom suites are representations only and may not look like the real items. Made with Made Easyplan 360.

- Immaculately Presented Extended Semi
- High Quality Accomodation
- Impressive Kitchen/Diner
- Four Bedrooms
- Driveway Parking
- Easy Walking Distance To Stockton Heath Village
- Two Reception Rooms
- Family Bathroom
- Large Westerly Facing Garden
- Garden Room



Adams