

Oulton Court, Grappenhall, Warrington

£85,000

1 1 1



****GROUND FLOOR RETIREMENT APARTMENT****

A ground floor retirement apartment forming part of the popular Oulton Court development in Grappenhall.

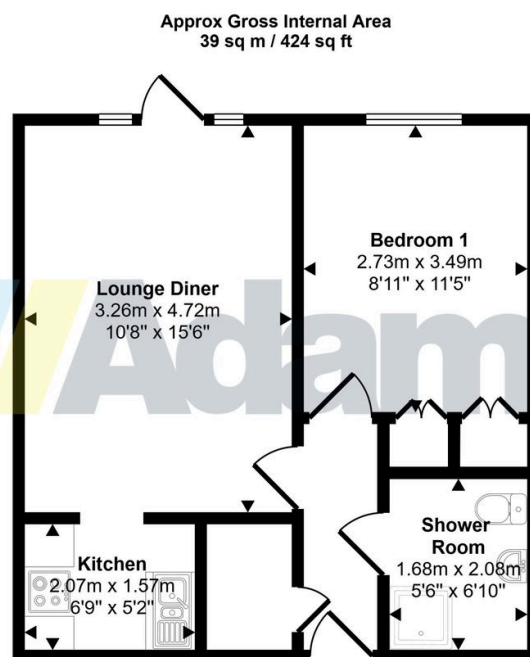
Features briefly include; entrance hall, lounge / dining room with direct access to the communal gardens, kitchen, bedroom with fitted wardrobes and shower room.

Residents within the Oulton Court development benefit from a dedicated house manager, communal lounges, a shared community kitchen and laundry facilities.

Externally there are lovely communal gardens and a residents parking area with barrier controlled access.

Viewing Advised. No Chain Delay With This Sale.

- Ground Floor Apartment
- Lounge With Direct Garden Access
- Refitted Shower Room
- Residents Lounge, Laundry & Kitchen
- Viewing Advised
- Popular Retirement Development
- One Bedroom With Fitted Wardrobes
- On Site House Manager
- Communal Parking & Gardens
- No Chain Delay



Floorplan

This floorplan is only for illustrative purposes and is not to scale. Measurements of rooms, doors, windows, and any items are approximate and no responsibility is taken for any error, omission or mis-statement. Icons of items such as bathroom suites are representations only and may not look like the real items. Made with Made Snappy 360.