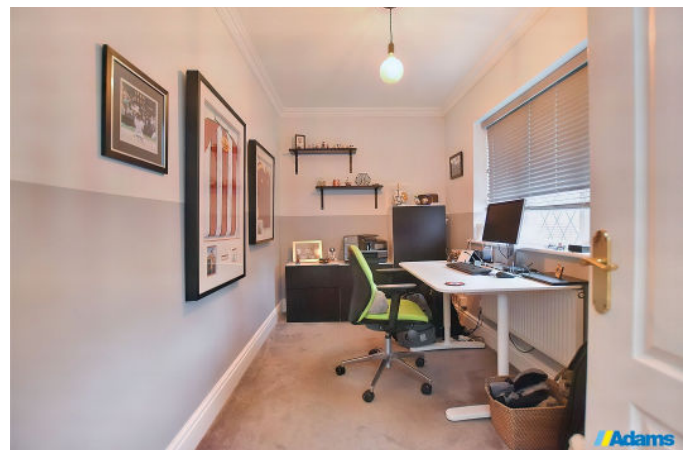


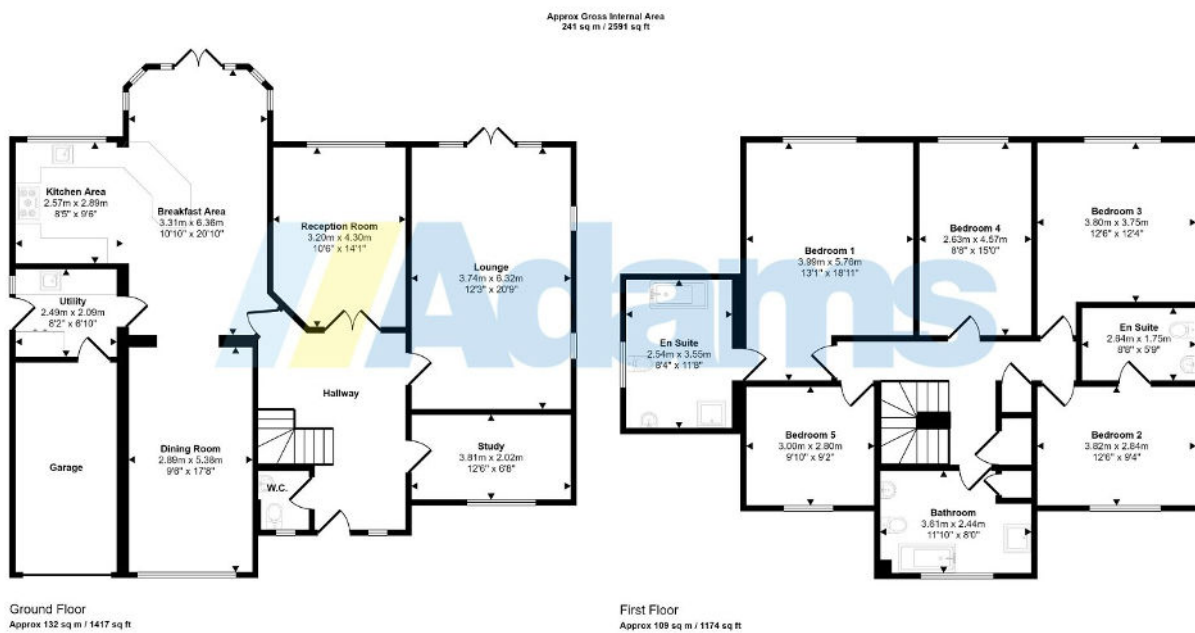
Woodstock Gardens, Appleton, Warrington

£725,000

🛏 5 🚗 3 🛋 3



- Substantial Executive Home
- Sought After Cul-De-Sac Location
- Approx 2500 SQFT
- Immaculate Presentation
- Five Beds / Three Baths
- Three Reception Rooms
- Open Plan Kitchen / Breakfast Room
- Utility & Ground Floor WC
- West Facing Rear Garden
- No Chain Delay



This floorplan is only for illustrative purposes and is not to scale. Measurements of rooms, doors, windows, and any items are approximate and no responsibility is taken for any error, omission or mis-statement. Copies of items such as bathroom suites are representations only and may not look like the real items. Made with Matter Shoggy 360.

A superb, larger format executive home offering over 2500 sqft of high quality accommodation in an excellent cul-de-sac position. Features include; entrance hall, cloaks / WC, study, lounge with log burning stove, sitting room, an impressive open plan kitchen / breakfast room with dining room off, utility, five well proportioned bedrooms, two ensuites and a family bathroom. Externally there is driveway parking for three cars, a single bay garage and a good size, fully landscaped West facing rear garden. Early Viewing Essential. No Chain Delay With This Sale.

