



Chapel Lane, Stockton Heath, WA4 6LL

£285,000

🛏️ 2 🚿 1 🚪 1



*****PARKING AT REAR*****

A beautifully presented larger style traditional terrace in the heart of Stockton Heath village.

Features include; UPVC double glazing, gas fired central heating, entrance porch, a large open plan lounge / dining room, kitchen with integrated appliances, first floor landing, two double bedrooms and four piece bathroom. Outside there is a large courtyard garden with twin brick built storage sheds and on street parking available directly to the rear.

Early Viewing Essential. No Chain Delay With This Sale.

Viewing

By prior appointment through our Stockton Heath office on 01925-398343.

Note

All measurements are approximate. No appliances or central heating systems referred to within these particulars have been tested and therefore their working order cannot be verified. Floor plans are for guide purposes only and all dimensions are approximate and are not to be used for room and furniture planning.

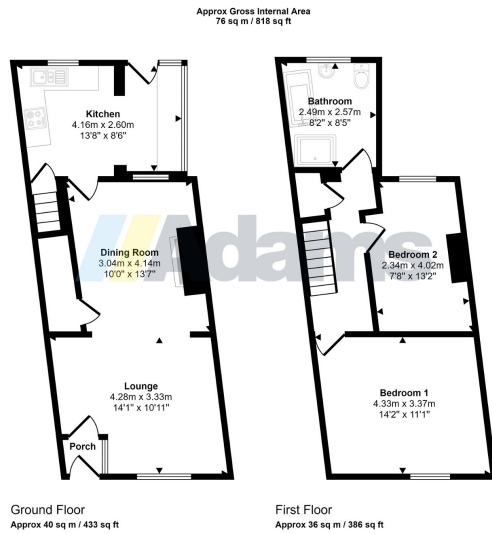
Agents Notes

Tenure: Leasehold

Lease Term: TBC

Annual Ground Rent: TBC





This floorplan is only for illustrative purposes and is not to scale. Measurements of rooms, doors, windows, and any items are approximate and no responsibility is taken for any error, omission or mis-statement. Icons of items such as bathroom suites are representations only and may not look like the real items. Made with Made Snappy 360.

- Larger Style Terrace House
- Central Village Location
- Immaculate Presentation
- Two Double Bedrooms
- Open Plan Lounge / Diner
- Modern Fitted Kitchen
- Four Piece Bathroom
- Spacious Courtyard Area
- Parking At Rear
- No Chain Delay

