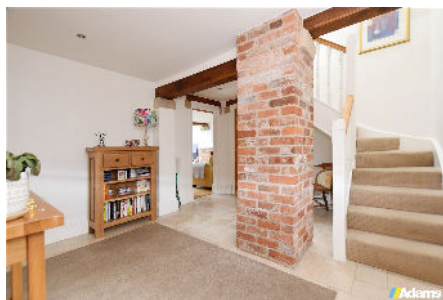


## Sumners Farm Court, Preston On The Hill

Offers In Region Of £585,000

🛏 3 🚗 2 🚗 2

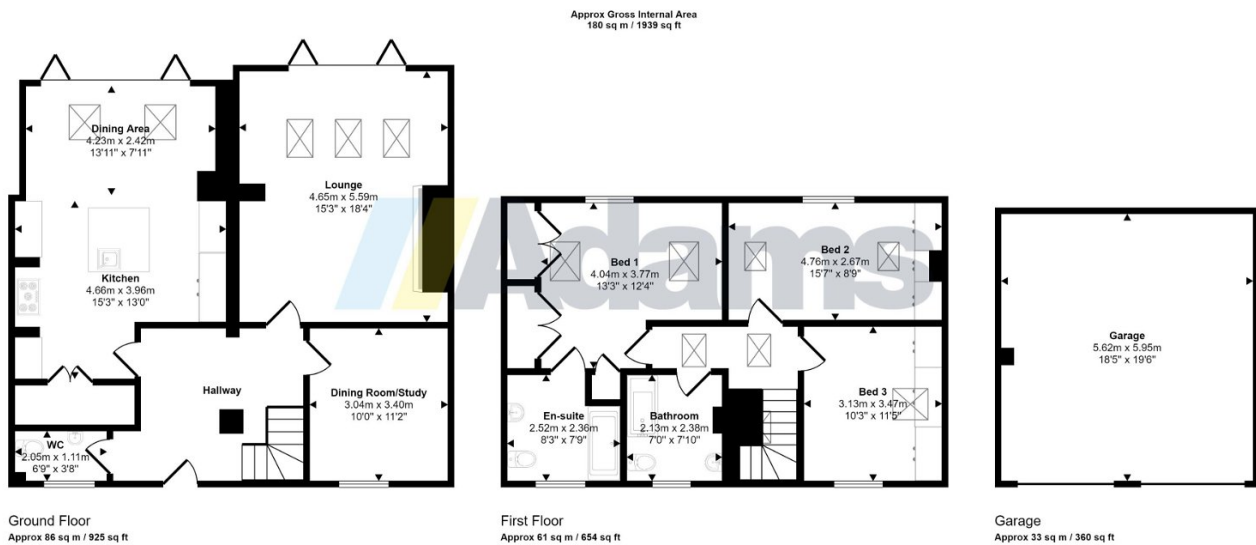


**IMPRESSIVE BARN CONVERSION FINISHED TO A HIGH STANDARD THROUGHOUT. BREATHTAKING SCENIC VIEWS TO REAR.**



## Key Features

- Three Double Bedrooms
- Impressive Finish Throughout
- Deceptively Spacious
- Generous Established Gardens
- Tenure: Freehold
- Stunning Barn Conversion
- Extended Ground Floor
- Breathtaking Scenic Views
- Double Detached Garage
- Council Tax: E. EPC: C.



This floorplan is only for illustrative purposes and is not to scale. Measurements of rooms, doors, windows, and any items are approximate and no responsibility is taken for any error, omission or mis-statement. Icons of items such as bathroom suites are representations only and may not look like the real items. Made with Made Snappy 360.