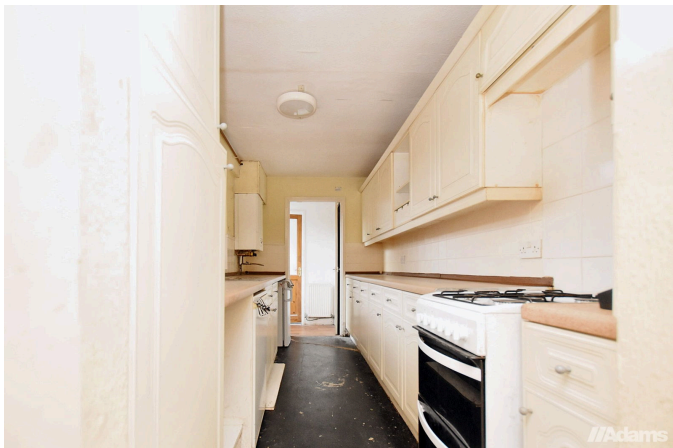


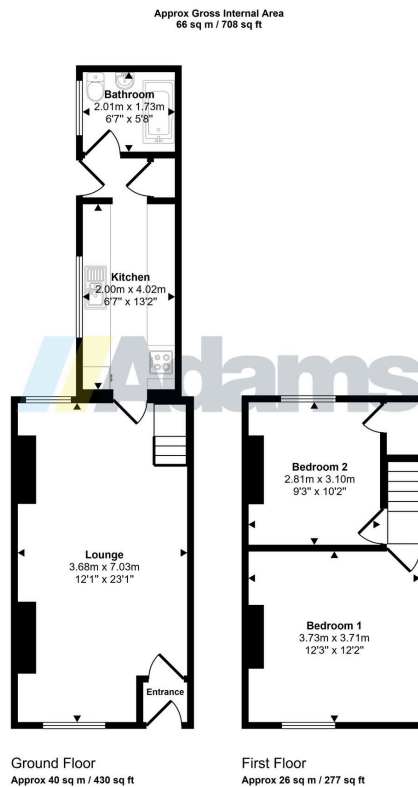
Cumberland Street, Latchford WA4

£127,500

🛏️ 2 🚿 1 🚗 1



- Traditional Mid Terrace
- Two Double Bedrooms
- Gas Fired 'Combi' Central Heating
- No Chain Delay
- Popular Latchford Location
- Large Open Plan Living Area
- On Road Parking To Front
- Early Viewing Advised



This floorplan is only for illustrative purposes and is not to scale. Measurements of rooms, doors, windows, and any items are approximate and no responsibility is taken for any error, omission or mis-statement. Icons of items such as bathroom suites are representations only and may not look like the real items. Made with Made Snappy 360.

******* NO CHAIN DELAY *******

A traditional two bedroom mid terrace property offering an ideal investment or first time buyer opportunity in a popular Latchford location.

Features briefly include; UPVC double glazing, gas fired 'combi' central heating, entrance porch, two reception rooms, kitchen, bathroom, two double bedrooms and a small yard to the rear.

RUNCORN

54 High Street, Runcorn, WA7 1AW
01928 574401
runcorn.sales@adamsea.co.uk

STOCKTON HEATH

12-14 Walton Road, Stockton Heath, WA4 6NL
01925 398343
s.heath@adamsea.co.uk

WIDNES

53-55 Albert Road, Widnes, WA8 6JS
0151 420 4055
widnes.sales@adamsea.co.uk