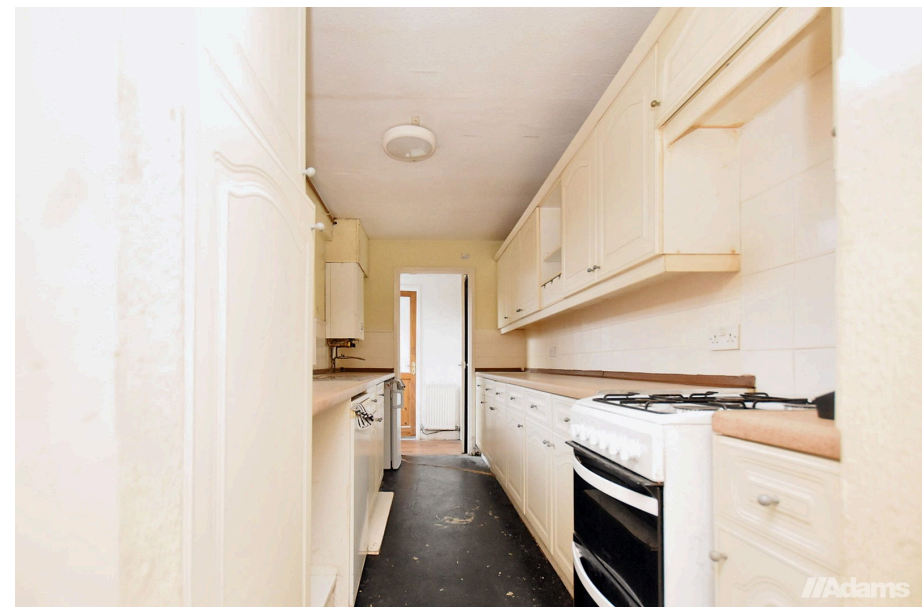




Cumberland Street, Latchford WA4

£127,500

🛏 2 🚿 1 🛋 1



******* NO CHAIN DELAY *******

A traditional two bedroom mid terrace property offering an ideal investment or first time buyer opportunity in a popular Latchford location.

Features briefly include; UPVC double glazing, gas fired 'combi' central heating, entrance porch, two reception rooms, kitchen, bathroom, two double bedrooms and a small yard to the rear.

Early Viewing Advised.

Viewing

By prior appointment through our Stockton Heath office on 01925-398343.

Note

All measurements are approximate. No appliances or central heating systems referred to within these particulars have been tested and therefore their working order cannot be verified. Floor plans are for guide purposes only and all dimensions are approximate and are not to be used for room and furniture planning.

Agents Notes

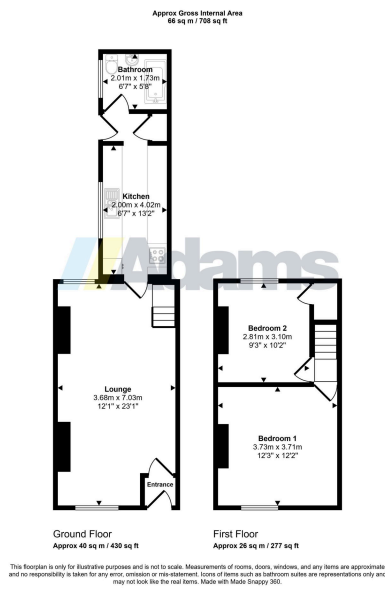
Tenure: Freehold

Council Tax Band: A

Local Authority: Warrington Borough Council

EPC Rating: tbc





- Traditional Mid Terrace
- Popular Latchford Location
- Two Double Bedrooms
- Large Open Plan Living Area
- Gas Fired 'Combi' Central Heating
- On Road Parking To Front
- No Chain Delay

