



Denbury Avenue, Stockton Heath WA4

£568,000

🛏 4 🚿 2 🛋 3



A rare opportunity to acquire a substantial period semi occupying a highly sought after position on Denbury Road, Stockton Heath.

Features briefly include; entrance porch & hall, lounge, impressive sitting room with open fire, kitchen diner, w/c and utility to the ground floor. To the first floor, the master bedroom benefits from en-suite, there are two further double bedrooms and a large family bathroom. To the second floor, there is an impressive, large fourth bedroom. Outside there is a South Westerly facing garden to the rear with substantial summer house/ workshop, to the front, driveway parking for two cars and a garage.

Early Viewing Essential.

Viewing

By prior appointment through our Stockton Heath office on 01925-398343.

Note

All measurements are approximate. No appliances or central heating systems referred to within these particulars have been tested and therefore their working order cannot be verified. Floor plans are for guide purposes only and all dimensions are approximate and are not to be used for room and furniture planning.

Agents Notes

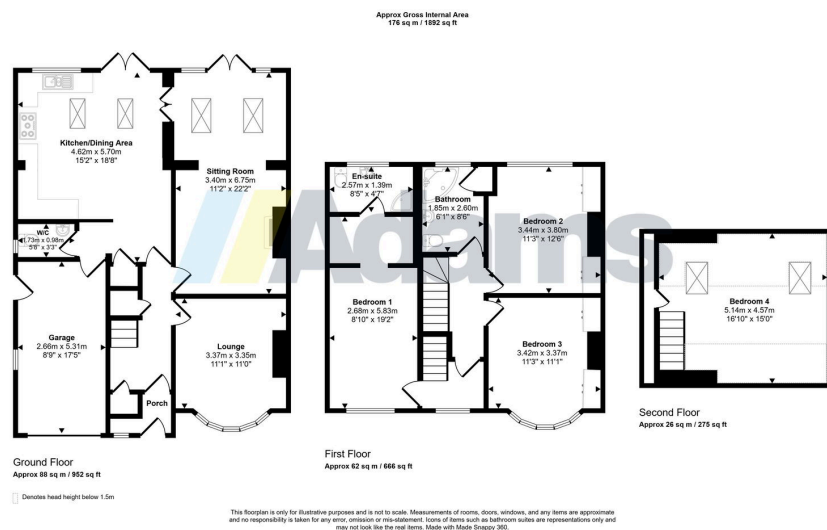
Tenure: Freehold

Council Tax Band: C

Local Authority: Warrington Borough Council

EPC Rating: tbc





- Period Semi-Detached
- 4 Bedrooms
- Lounge
- Large Sitting Room
- Kitchen/Diner
- Downstairs W/C
- Garage
- Large Garden
- Driveway Parking

