

## Clearwater Quays, Latchford, WA4

£135,000

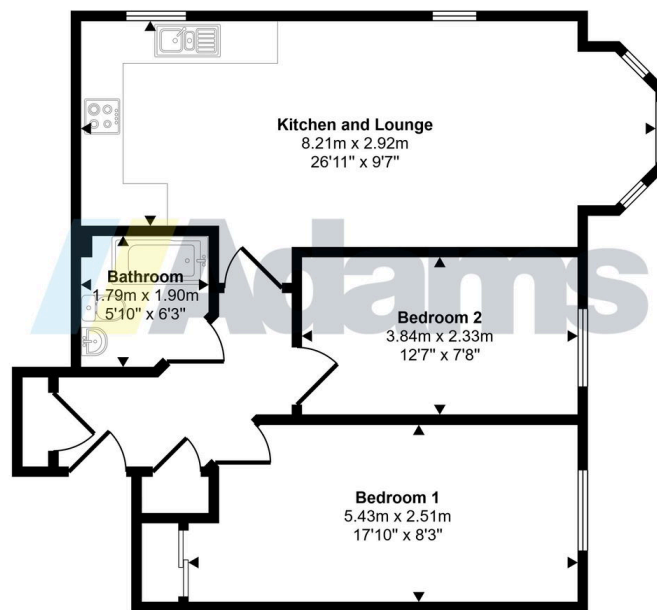
🛏️ 2 🚿 1 🚗 1



Adams Estate Agents are delighted to offer this well presented, two bedroom, ground floor apartment, forming part of the popular Clearwater Quays development at Latchford. Features include; a secure intercom entry system, entrance hall, lounge / diner, kitchen, two double bedrooms and bathroom. Early Viewing Advised.

- Ground Floor Apartment
- Well Presented
- Convenient Location
- Large Bathroom
- Ideally placed for Trans Penine Trail
- 2 Bedroom
- Spacious Throughout
- Modern Kitchen
- Allocated Parking
- South Facing

Approx Gross Internal Area  
60 sq m / 647 sq ft



Floorplan

This floorplan is only for illustrative purposes and is not to scale. Measurements of rooms, doors, windows, and any items are approximate and no responsibility is taken for any error, omission or mis-statement. Icons of items such as bathroom suites are representations only and may not look like the real items. Made with Made Snappy 360.