



Raymond Avenue, Stockton Heath, Warrington

£475,000

3 3 2



A unique opportunity to purchase a stunning modern home within easy walking distance of the village centre. Completed in 2019 to a particularly high standard, this property simply must be viewed to be fully appreciated.

In brief details the accommodation includes; entrance hall, lounge, a stunning open plan kitchen / dining room with atrium skylight & bi-folding doors opening to the rear garden, utility, cloaks / WC and three double bedrooms (all with ensuite facilities).

Outside there is driveway parking for two cars at the front and a good size enclosed garden at the rear.

No Chain Delay With This Sale. Early Viewing Advised.

Viewing

By prior appointment through our Stockton Heath office on 01925-398343.

Note

All measurements are approximate. No appliances or central heating systems referred to within these particulars have been tested and therefore their working order cannot be verified. Floor plans are for guide purposes only and all dimensions are approximate and are not to be used for room and furniture planning.

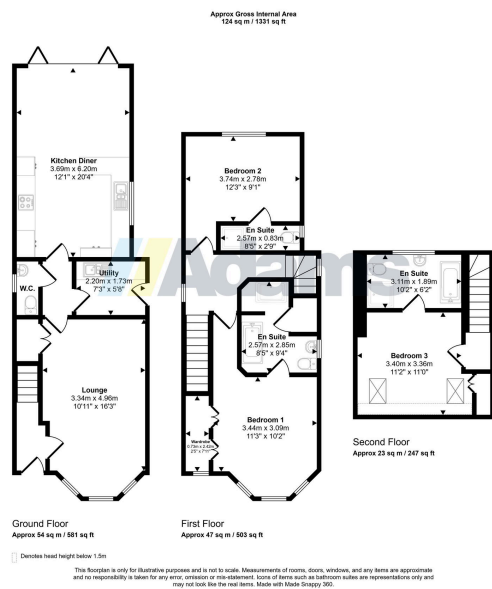
Agents Notes

Tenure: Freehold

Council Tax Band: E

Local Authority: Warrington Borough Council





- Modern Detached House
- Completed In 2019
- Very High Standard Throughout
- Stunning Open Plan Kitchen / Diner
- Large Lounge
- Utility & Cloaks / WC
- Three Double Bedrooms
- Three Ensuites
- Walking Distance To Village
- No Chain Delay

