

Oulton Court, WA4 2NT

£80,000

1 1 1



****GROUND FLOOR RETIREMENT APARTMENT****

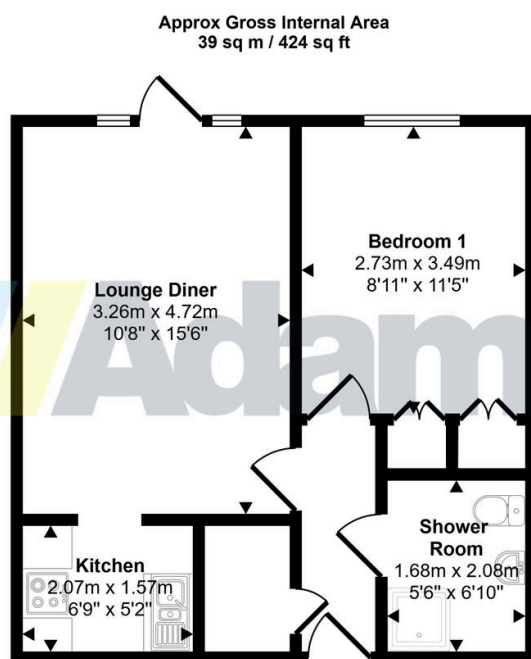
A ground floor retirement apartment forming part of the popular Oulton Court development in Grappenhall.

Residents within the Oulton Court development benefit from a dedicated house manager, communal lounges, a shared community kitchen and laundry facilities.

Externally there are lovely communal gardens and a residents parking area with barrier controlled access.

Key Features

- Ground Floor Apartment
- Popular Retirement Development
- Lounge With Direct Garden Access
- One Bedroom With Fitted Wardrobes
- Refitted Shower Room
- On Site House Manager
- Residents Lounge, Laundry & Kitchen
- Communal Parking & Gardens
- Viewing Advised
- No Chain Delay



Floorplan

This floorplan is only for illustrative purposes and is not to scale. Measurements of rooms, doors, windows, and any items are approximate and no responsibility is taken for any error, omission or mis-statement. Icons of items such as bathroom suites are representations only and may not look like the real items. Made with Made Snappy 360.