

Pike Street, Stockton Heath, Warrington

£250,000

🛏️ 2 🚿 1 🚗 2



******* NO CHAIN DELAY *******

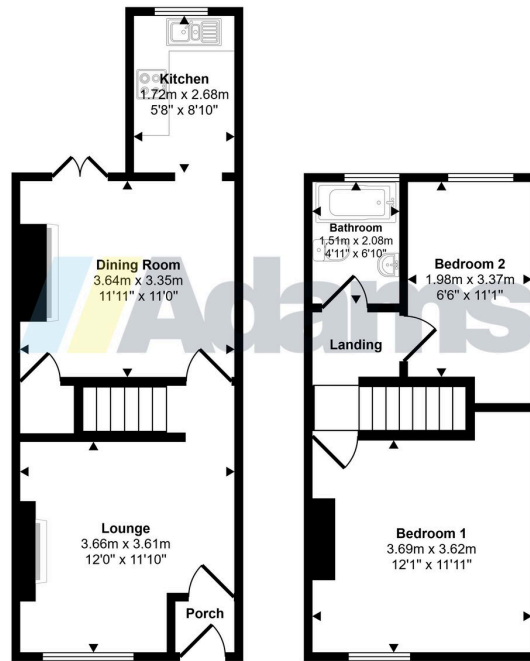
A traditional two bedroom mid-terrace house in the heart of Stockton Heath village centre.

Features of the well presented accommodation include; entrance porch, lounge, dining room, modern kitchen, first floor landing, two bedrooms and bathroom. Outside there is a small forecourt garden and a good size enclosed yard at the rear.

Early Viewing Advised. Ideal First Time Buy. No Chain Delay With This Sale.

- Traditional Terrace House
- Well Presented Accommodation
- Two Bedrooms
- Gas Central Heating
- Ideal First Time Buy
- Central Stockton Heath Location
- Two Reception Rooms
- First Floor Bathroom
- UPVC Double Glazing
- No Chain Delay

Approx Gross Internal Area
64 sq m / 686 sq ft



Ground Floor
Approx 34 sq m / 367 sq ft

First Floor
Approx 30 sq m / 319 sq ft

This floorplan is only for illustrative purposes and is not to scale. Measurements of rooms, doors, windows, and any items are approximate and no responsibility is taken for any error, omission or mis-statement. Icons of items such as bathroom suites are representations only and may not look like the real items. Made with Made Snappy 360.