

## Rushmore Grove, Paddington, Warrington

£240,000

🛏️ 2 🚿 1 🚗 1



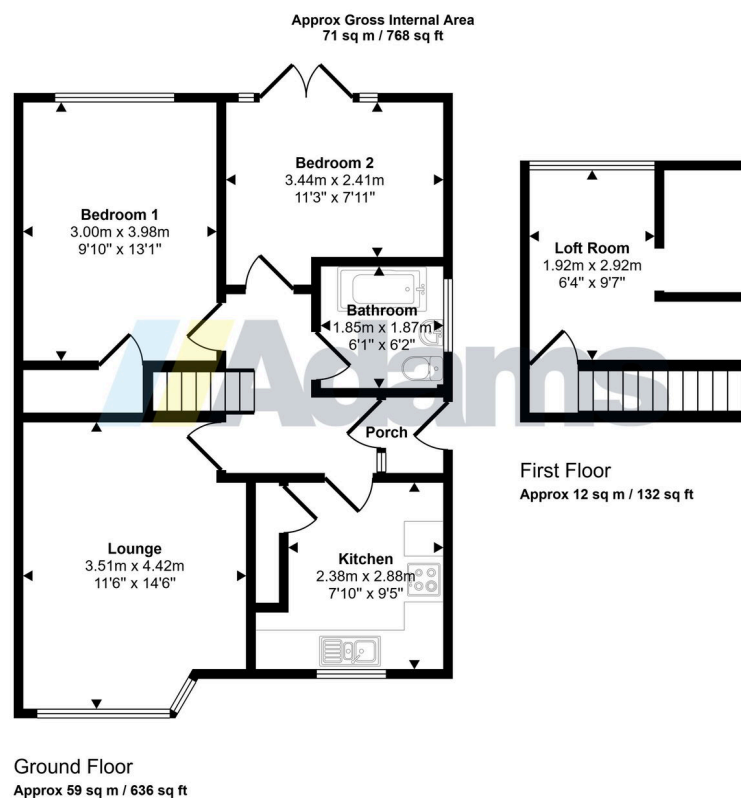
**\*\*\*\*\* NO CHAIN DELAY \*\*\*\*\***

A semi-detached bungalow occupying a prime cul-de-sac position on Rushmore Grove, Paddington.

Features of the adaptable accommodation include; entrance porch & hall, lounge, kitchen, two double bedrooms and bathroom. A fixed staircase from the hallway gives access to a useful first floor loft room (currently used as a home office). Outside there are good size gardens to both the front & rear elevations, driveway parking for several cars & a single bay garage.

Early Viewing Advised. No Chain Delay With This Sale.

- Semi Detached Bungalow
- Excellent Cul-De-Sac Position
- Two Beds + Loft Room
- Garage + Driveway Parking
- Sought After Location
- Adaptable Accommodation
- Good Size Gardens
- No Chain Delay



This floorplan is only for illustrative purposes and is not to scale. Measurements of rooms, doors, windows, and any items are approximate and no responsibility is taken for any error, omission or mis-statement. Icons of items such as bathroom suites are representations only and may not look like the real items. Made with Made Snappy 360.