



Birchdale Road, Stockton Heath WA4

£675,000

3 2 2



STUNNING THREE BEDROOM EXTENDED SEMI-DETACHED FAMILY HOME. IMMACULATEDLY PRESENTED THROUGHOUT.

Adams Estate Agents are delighted to offer to market this attractive, period semi-detached home, situated in the highly desirable location of Birchdale Road, within easy walking distance of Stockton Heath village. This superb, recently renovated, extended family home must be viewed to be fully appreciated. The spacious accommodation comprises entrance hallway, sitting room, w/c, utility and large, impressive kitchen diner with lounge area on the ground floor. To the first floor, there are three well appointed large bedrooms, the master with en-suite and a modern family shower room. Outside, the substantial driveway provides off road parking at the front with a spacious garage and the rear benefits from a large patio area and landscaped lawn.

Viewing

By prior appointment through our Stockton Heath office on 01925-398343.

Note

All measurements are approximate. No appliances or central heating systems referred to within these particulars have been tested and therefore their working order cannot be verified. Floor plans are for guide purposes only and all dimensions are approximate and are not to be used for room and furniture planning.

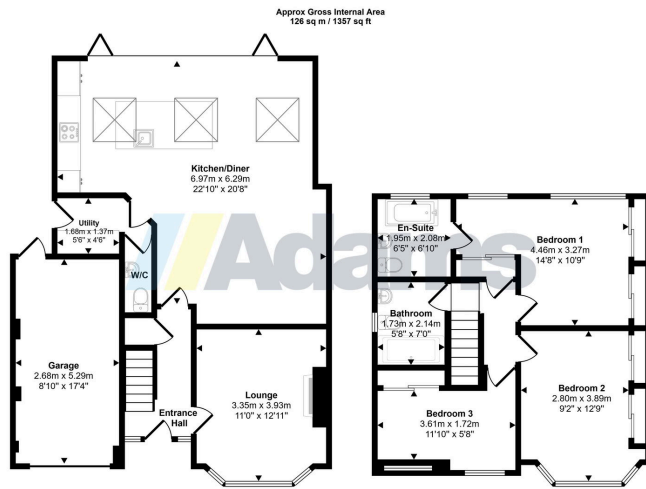
Agents Notes

Tenure: Leasehold

Council Tax Band: D

EPC: tbc





Ground Floor
Approx 77 sq m / 824 sq ft

First Floor
Approx 50 sq m / 533 sq ft

This floorplan is only for illustrative purposes and is not to scale. Measurements of rooms, doors, windows, and any items are approximate and no responsibility is taken for any error, omission or mis-statement. Items of items such as bathroom suites are representations only and may not look like the real items. Made with Made Snappy 360.

- Extended Family Home
- Large Open-Plan Kitchen-Diner & Lounge
- Utility Room
- En-Suite
- Landscaped Garden
- Beautifully Appointed Throughout
- Under-Floor Heating In Kitchen
- Three Double Bedrooms
- Desirable Location
- Garage

