



Oldham Street, Latchford, Warrington

£145,000

🛏 2 🚿 1 🛋 2



Offered for sale with the benefit of having 'no chain delay' this traditional two bedroom terrace house provides an ideal investment or first time buyer opportunity in a popular Latchford location.

Features include; gas fired central heating, UPVC double glazing, two reception rooms, kitchen, bathroom, two double bedrooms and rear yard.

Early Viewing Advised.

Viewing

By prior appointment through our Stockton Heath on 01925-398343.

Note

All measurements are approximate. No appliances or central heating systems referred to within these particulars have been tested and therefore their working order cannot be verified. Floor plans are for guide purposes only and all dimensions are approximate.

Agents Notes

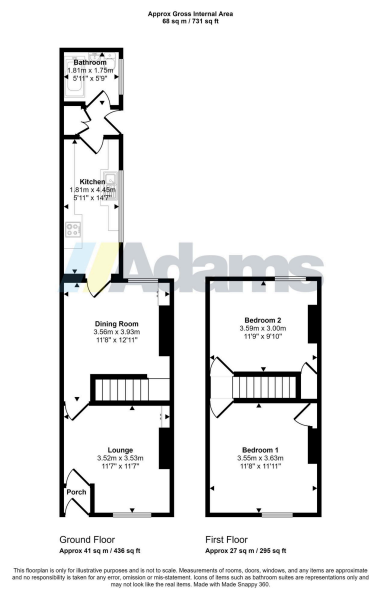
Tenure: TBC

Council Tax Band: A

Local Authority: Warrington Borough Council

EPC Rating: C





- Traditional Mid Terrace House
- Two Reception Rooms
- UPVC Double Glazing
- Early Viewing Advised
- Two Double Bedrooms
- Gas Central Heating
- Ideal Investment / FTB
- No Chain Delay

