

Pelham Road, Thelwall, Warrington

Offers Over £290,000

3 1 2



This extended three bedroom semi-detached house occupies a favourable position on Pelham Road, Thelwall and benefits from a South facing garden at the rear.

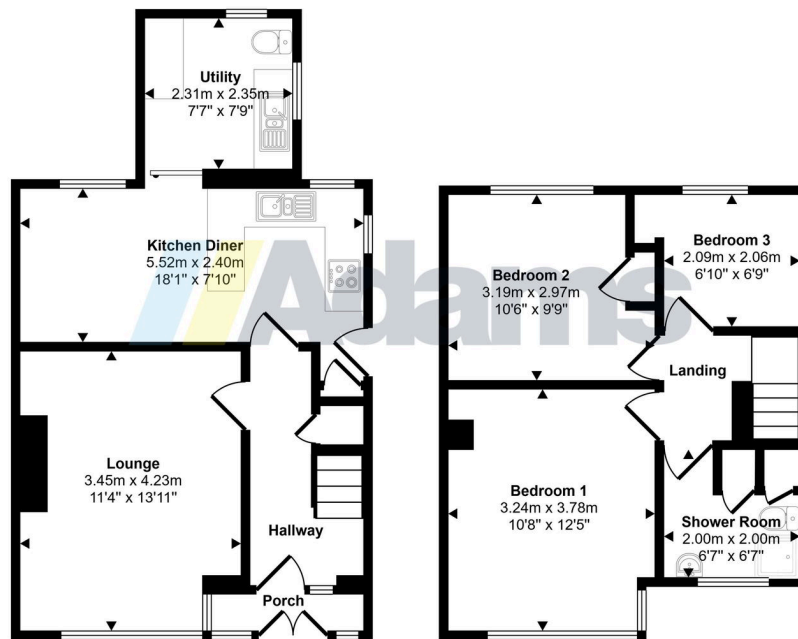
Features briefly include; entrance porch & hall, lounge, kitchen / dining room, utility, first floor landing, three bedrooms and shower room. Outside there is driveway parking for two cars at the front and a low maintenance South facing garden at the rear.

Viewing Advised.

Key Features

- Semi Detached House
- Three Bedrooms
- Utility Room
- South Facing Garden
- Popular Residential Location
- Lounge & Kitchen / Diner
- Modern Shower Room
- Driveway Parking

Approx Gross Internal Area
78 sq m / 839 sq ft



Ground Floor
Approx 43 sq m / 462 sq ft

First Floor
Approx 35 sq m / 377 sq ft

This floorplan is only for illustrative purposes and is not to scale. Measurements of rooms, doors, windows, and any items are approximate and no responsibility is taken for any error, omission or mis-statement. Icons of items such as bathroom suites are representations only and may not look like the real items. Made with Made Snappy 360.