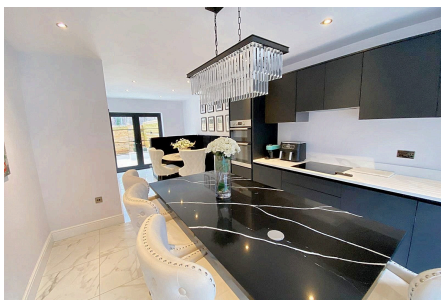


Egerton Mews, Stockton Heath WA4 6QG

£410,000

3 2 1



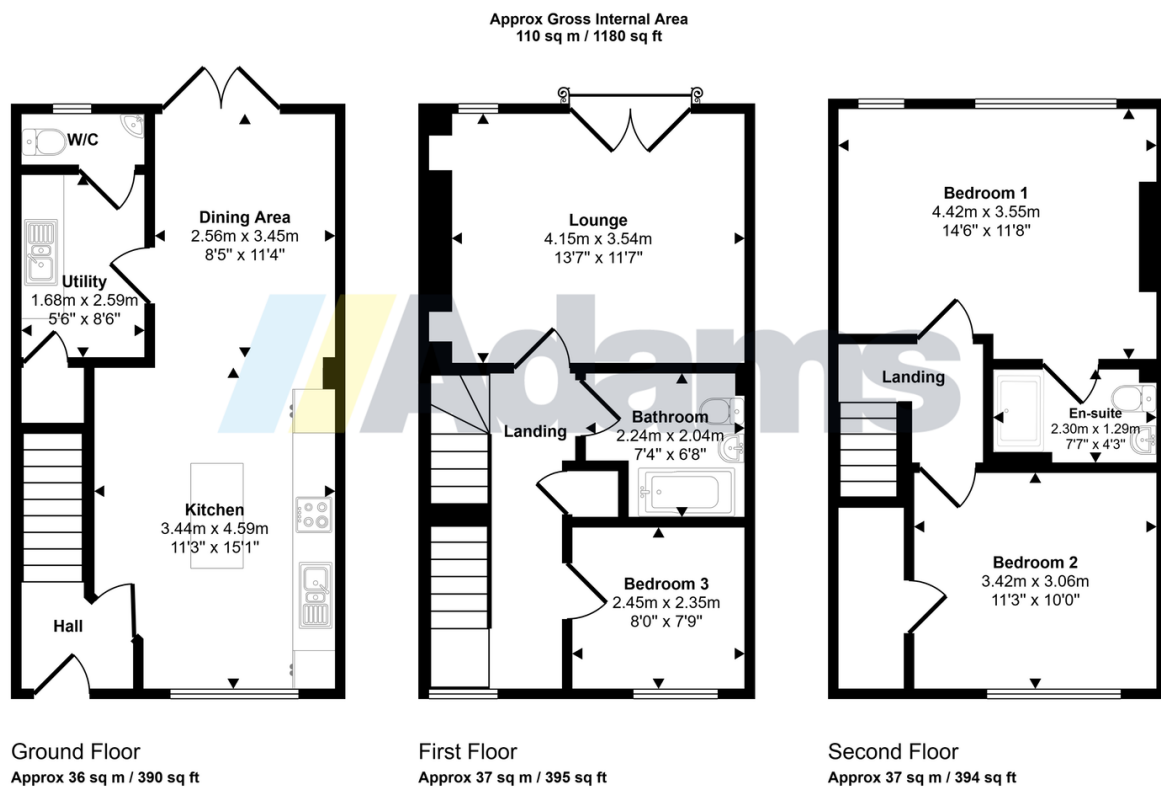
*****No Chain Delay*****

A stunning three storey family home in the heart of Stockton Heath village.

This beautifully appointed property briefly provides; entrance hall, open plan kitchen-diner, utility, WC, first floor lounge, family bathroom & third bedroom. To the second floor there are a further two double bedrooms, one with en-suite. Outside there is driveway parking for several cars and private, landscaped garden to the rear.

Key Features

- No Onward Chain
- Village Centre Location
- 3 Bedrooms
- Beautifully Appointed Throughout
- Utility
- Open Plan Kitchen Diner
- Downstairs W/C
- En-Suite
- Driveway Parking
- Private Rear Garden



This floorplan is only for illustrative purposes and is not to scale. Measurements of rooms, doors, windows, and any items are approximate and no responsibility is taken for any error, omission or mis-statement. Icons of items such as bathroom suites are representations only and may not look like the real items. Made with Made Snappy 360.