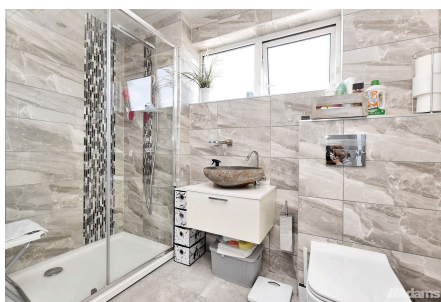


Dale Lane, WA4 3DL

Offers Over £240,000

3 1 2



A fully modernised, spacious three bedroom mid-town house in a popular and convenient location on Dale Lane, Appleton.

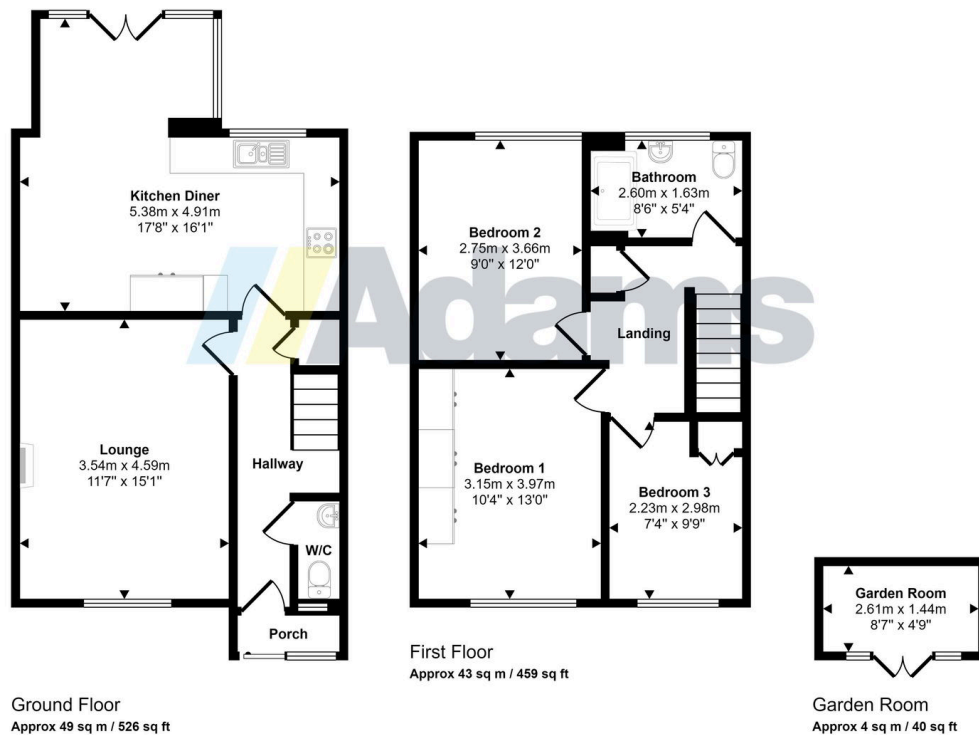
The well presented accommodation briefly includes; entrance porch & hall, WC, lounge, open plan kitchen/diner, first floor landing, three good size bedrooms and modern bathroom. Outside there is a low maintenance rear garden with garden room and a well maintained private front garden. Off road parking is also available at the rear.

Early Viewing Advised.

Key Features

- Fully Modernised Town House
- Three Good Size Bedrooms
- Open Plan Kitchen / Diner
- Viewing Essential
- Popular & Convenient Location
- Ground Floor W/C
- Modern Bathroom
-
-

Approx Gross Internal Area
95 sq m / 1026 sq ft



This floorplan is only for illustrative purposes and is not to scale. Measurements of rooms, doors, windows, and any items are approximate and no responsibility is taken for any error, omission or mis-statement. Icons of items such as bathroom suites are representations only and may not look like the real items. Made with Made Snappy 360.