



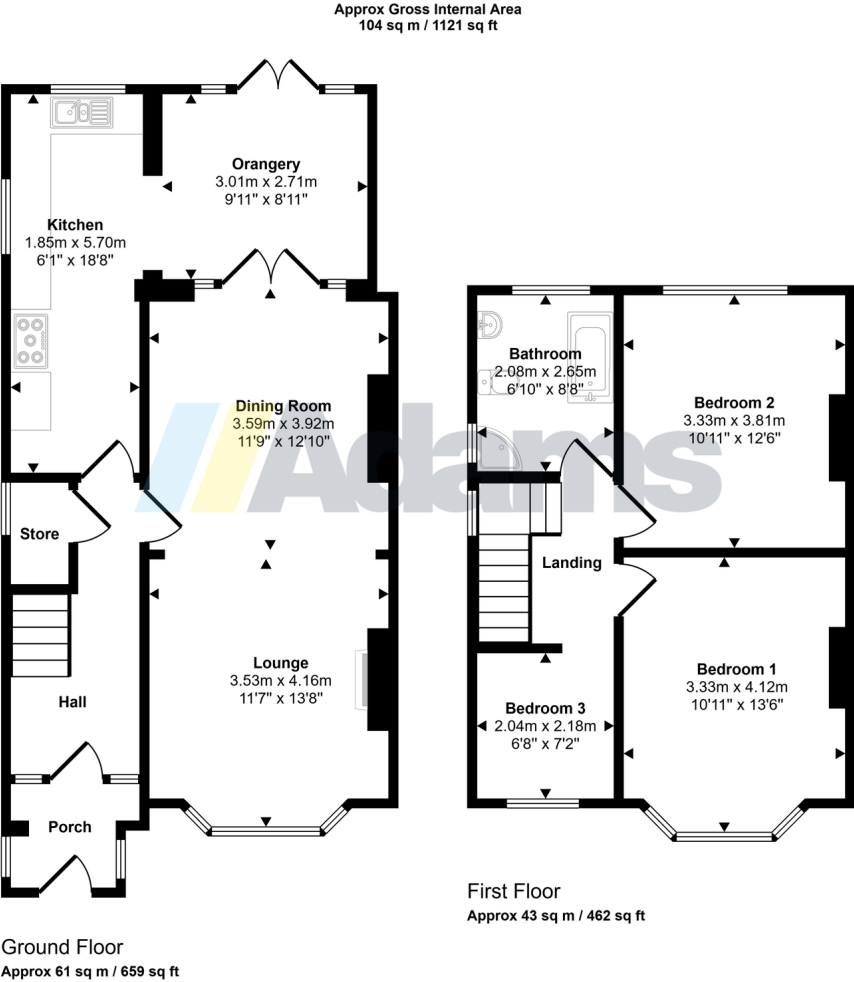
Halegate Road, Widnes

Offers Over £300,000

3 1 3



Superb Family Home with Views Over FarmlandAdams Real Estate are delighted to market this most attractively presented semi detached house pleasantly situated on Halegate Road, having a generous sized south facing rear garden which enjoys an open aspect towards 'Pickerings Pasture'. It provides generous reception rooms, orangery and modern fitted kitchen. The bedroom accommodation is equally impressive providing a superb master bedroom, with two further well proportioned bedrooms and contemporary bathroom, complete the 1st floor accommodation. Generous gardens to front and rear that can only be appreciated by closer inspection. Useful Garage. Council Tax C. EPC to Follow.



This floorplan is only for illustrative purposes and is not to scale. Measurements of rooms, doors, windows, and any items are approximate and no responsibility is taken for any error, omission or mis-statement. Icons of items such as bathroom suites are representations only and may not look like the real items. Made with Made Snappy 360.





- Semi-Detached
- Three Bedrooms
- Orangery
- Stunning Rear Garden
- Views over Farmland
- Useful Garage
- Modern Fitted Kitchen
- Early Viewing Essential
- Council Tax
- EPC to Follow

