



Wharford Lane, Sandymoor, WA7 1EB

£285,000

3 2 2



A beautifully presented modern semi-detached home forming part of the sought after Bloor Homes development at Beamish Place, Sandymoor.

Features briefly include; entrance hall, lounge, kitchen / dining room, utility, WC, first floor landing, three bedrooms, ensuite and family bathroom. Outside there is driveway parking for two cars at the side of the property and a good size, low maintenance garden at the rear.

Early Viewing Advised. No Chain Delay With This Sale.

Viewing

By prior appointment through our Stockton Heath office on 01925-398343.

Note

All measurements are approximate. No appliances or central heating systems referred to within these particulars have been tested and therefore their working order cannot be verified. Floor plans are for guide purposes only and all dimensions are approximate.

Agents Notes

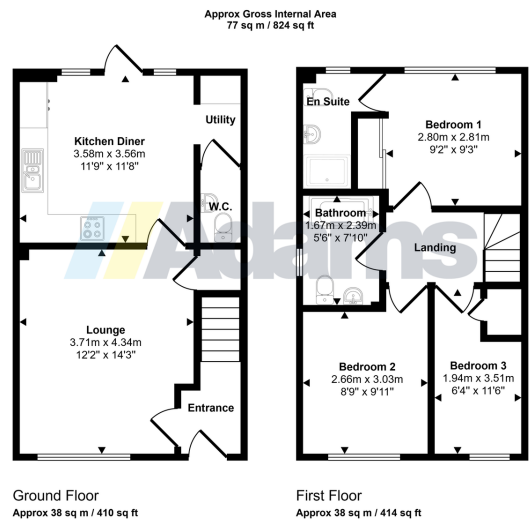
Tenure: Freehold

Council Tax Band: C

Local Authority: Halton Borough Council

EPC Rating: B





This floorplan is only for illustrative purposes and is not to scale. Measurements of rooms, doors, windows, and any items are approximate and no responsibility is taken for any error, omission or mis-statement. Icons of items such as bathroom suites are representations only and may not look like the real items. Made with Made Snappy 360.

- Modern Semi Detached House
- Three Bedrooms + Ensuite
- Utility & Ground Floor WC
- Driveway Parking For Two Cars
- Sought After Development
- Kitchen / Dining Room
- Good Size Rear Garden
- No Chain Delay

