



Birch Grove, Latchford, WA4 1EQ

£225,000

3 1 2



A three-bedroom semi-detached home in the Victoria Park area of Latchford, offering superb potential for modernisation and available with no onward chain.

This well-proportioned property features an entrance hall leading to a bright lounge, and a generously sized kitchen with dining area. Upstairs, there are three good bedrooms along with a shower room.

Externally, the home enjoys a good-sized rear paved, low maintenance garden, while the front of the property boasts a large gated driveway with parking for up to three cars and potential space to add a garage.

With its desirable location and scope to create a wonderful family home, this property represents an exciting opportunity for buyers looking to put their own stamp on a house. Ideal for investors, first-time buyers, or those seeking a project.

The property is situated on a very quiet road and enjoys a pleasant front outlook onto the Black Bear Linear Park area, providing a green and attractive setting.

Properties in this area rarely come to market, so viewings are highly recommended. Don't miss your chance to secure this home!

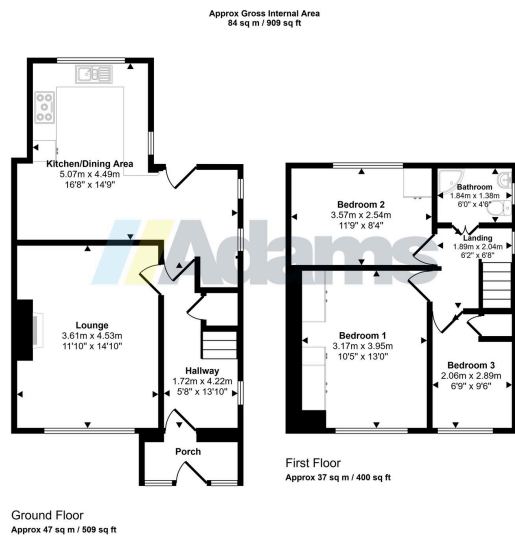
Viewing

By prior appointment through our Stockton Heath office on 01925-398343.

Note

All measurements are approximate. No appliances or central heating systems referred to within these particulars have been tested and therefore their working order cannot be verified. Floor plans are for guide purposes only and all dimensions are approximate and are not to be used for room and furniture planning.





- Three-bedroom semi-detached property in a desirable Latchford location
- Front porch with spacious entrance hall
- Good-sized kitchen/diner with scope to reconfigure
- Fully serviced boiler providing GCH
- Close to local amenities, reputable schools, and excellent transport links
- Excellent potential for modernisation throughout
- Bright and well-proportioned lounge
- Hardwood double glazing throughout & burglar alarm
- Gated driveway providing ample off-road parking
- No chain delay

