





Gainsborough Road WA4 6BP

£289,000

🛏 2 🚿 1 🚗 2





Located on the highly sought-after Gainsborough Road, this well-presented two-bedroom dormer semi-detached bungalow offers versatile living space, generous gardens and an excellent location close to Stockton Heath village centre and Warrington town centre.

The accommodation begins with a welcoming entrance hall leading to Bedroom Two, a well-proportioned and flexible room suitable for guests or home working. The lounge provides a comfortable main living area, while the modern shower room is finished to a contemporary standard.

To the rear of the property is a cosy snug/dining room with patio doors opening onto the garden, creating an ideal space for relaxing or entertaining. The good-sized kitchen features a breakfast bar and offers ample storage and worktop space.

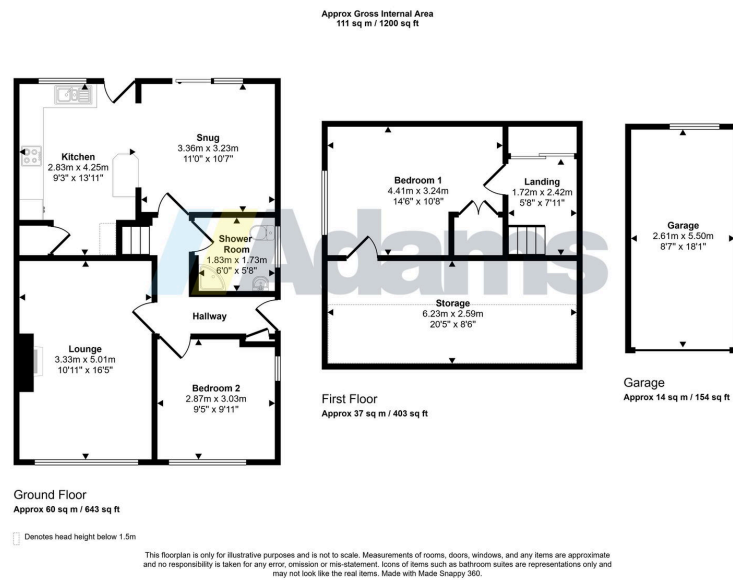
To the first floor, a large landing with storage leads to the spacious principal bedroom, which benefits from additional eaves storage.

Externally, the property enjoys a front garden and a gated driveway providing off-road parking and access to a large garage. The private, landscaped rear garden is a particular highlight, featuring mature planting and a pergola, ideal for outdoor dining and entertaining.

A fantastic opportunity to purchase a bungalow in a popular and convenient location. Early viewing is recommended.







- Two-bedroom dormer semi-detached bungalow
- Popular Gainsborough Road location
- Close to Stockton Heath village centre and Warrington town centre
- Lounge plus snug/dining room with patio doors
- Modern shower room
- Good-sized kitchen with breakfast bar
- Large first-floor landing with storage
- Gated driveway and large garage
- Private, landscaped rear garden
- No onward chain

