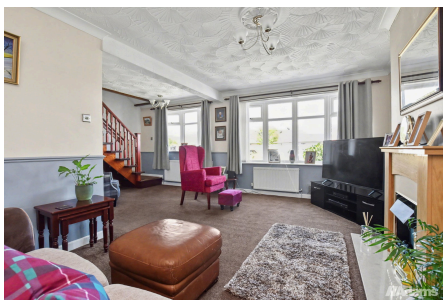


Gainsborough Road, WA4 6BP

Offers In Region Of £290,000

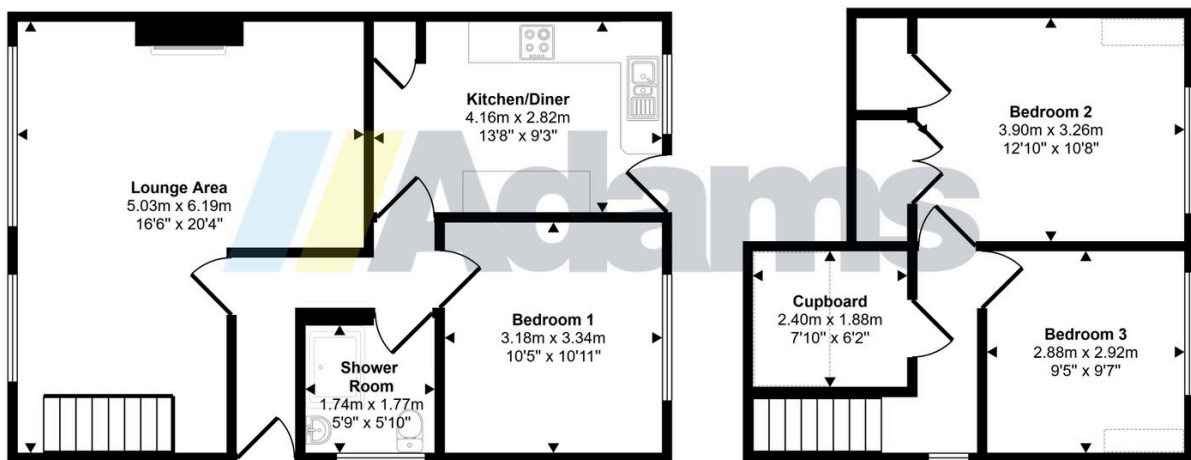


Located on the highly sought-after Gainsborough Road, this well-presented three-bedroom semi-detached bungalow offers versatile living space, generous gardens and an excellent location close to Stockton Heath village centre and Warrington town centre.

Key Features


- Three Bedroom
- Well Presented Throughout
- Well Maintained Gardens
- Sought After Location
- Semi-Detached Bungalow
- Modern Kitchen & Shower Room
- Off Road Parking
- Leasehold Tenure

Approx Gross Internal Area
93 sq m / 998 sq ft



Ground Floor
Approx 58 sq m / 627 sq ft

First Floor
Approx 35 sq m / 372 sq ft

 Denotes head height below 1.5m

This floorplan is only for illustrative purposes and is not to scale. Measurements of rooms, doors, windows, and any items are approximate and no responsibility is taken for any error, omission or mis-statement. Icons of items such as bathroom suites are representations only and may not look like the real items. Made with Made Snappy 360.