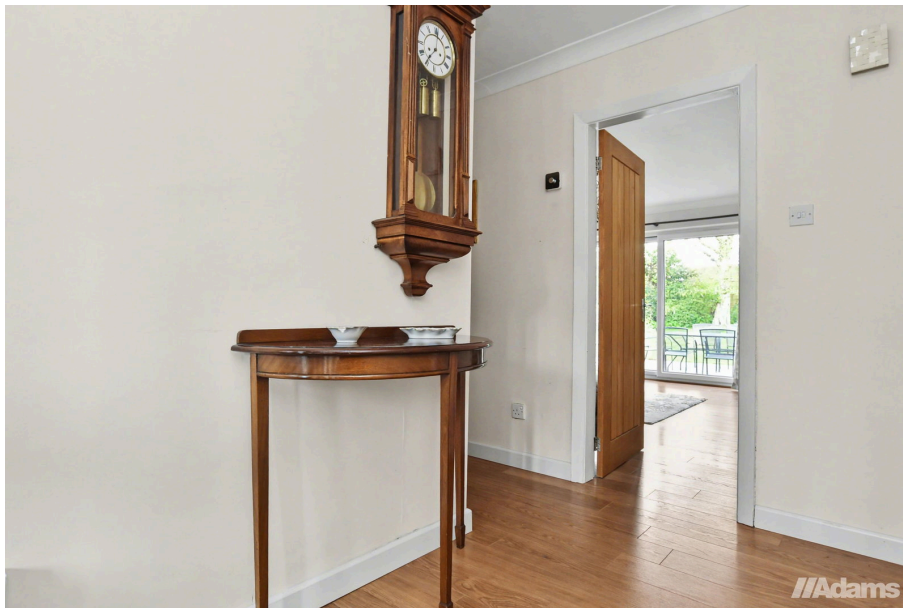




Portola Close, Grappenhall, Warrington, WA4 2SW

Offers In Region Of £530,000

3 1 1



Positioned within one of Grappenhall's desirable residential settings, this attractive three-bedroom detached bungalow presents an excellent opportunity to acquire a spacious and versatile home set on a generous plot.

The property is immaculately presented throughout and offers well-balanced accommodation, beginning with a welcoming porch and entrance hallway. The substantial lounge provides an ideal space for both everyday living and entertaining, while the modern kitchen/breakfast room is thoughtfully designed to combine style with practicality.

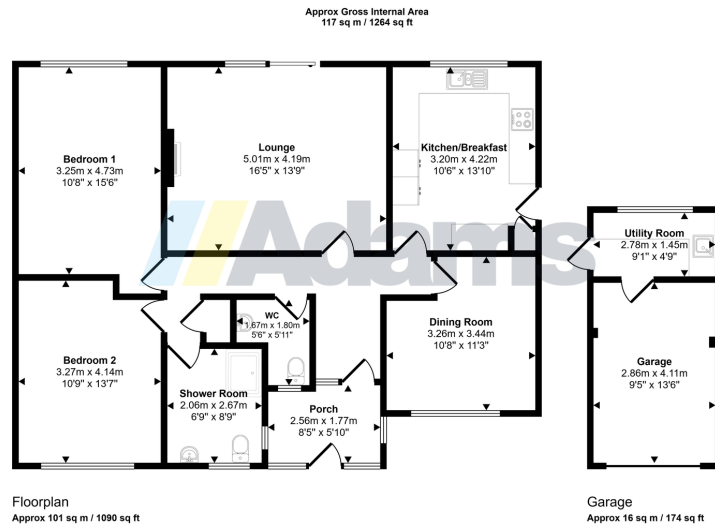
There are three well-proportioned bedrooms, offering flexibility for family living, guest accommodation, or home working. These are served by a contemporary shower room, complemented by an additional WC for convenience.

A notable feature is the partially converted garage, which has been cleverly adapted to provide a useful utility area alongside valuable storage space, with an electric door to front.

Externally, the bungalow enjoys a larger-than-average plot with mature, well-maintained gardens to both the front and rear, offering a high degree of privacy and outdoor enjoyment. A driveway provides ample off-road parking.

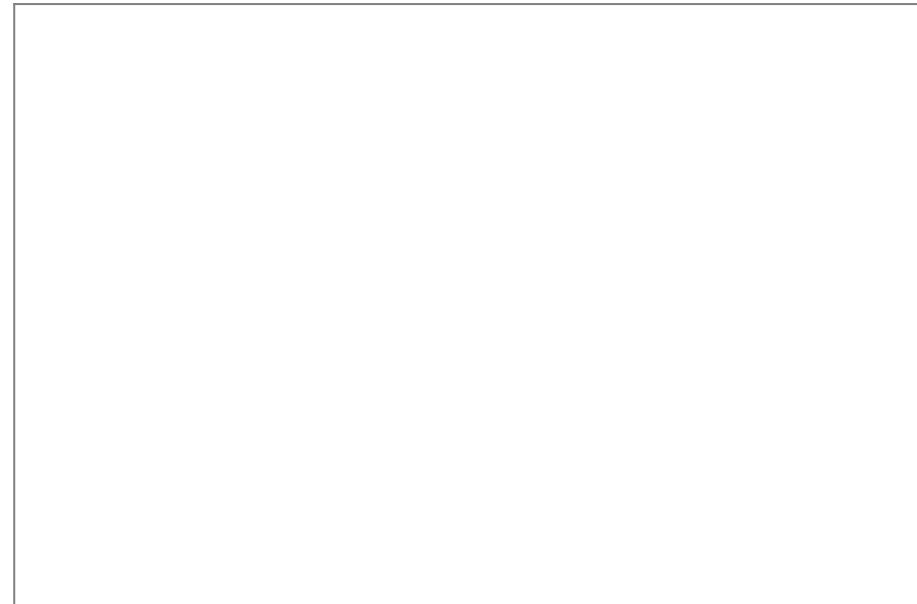
Ideally located within easy reach of local amenities, highly regarded schools, and excellent transport links, this property perfectly balances peaceful residential living with everyday convenience.





This floorplan is only for illustrative purposes and is not to scale. Measurements of rooms, doors, windows, and any items are approximate and no responsibility is taken for any error, omission or mis-statement. Icons of items such as bathroom suites are representations only and may not look like the real items. Made with Made Snappy 360.

- Detached three-bedroom bungalow
- Spacious lounge with patio doors to garden
- Deceptively spacious throughout
- Larger than average plot
- Sought-after location in Grappenhall
- Modern kitchen & shower room
- Well established gardens throughout
- No onward chain



www.adamsea.co.uk

RUNCORN

54 High Street, Runcorn, WA7 1AW
01928 574401
runcorn.sales@adamsea.co.uk

STOCKTON HEATH

12-14 Walton Road, Stockton Heath, WA4 6NL
01925 398343
s.heath@adamsea.co.uk

WIDNES

53-55 Albert Road, Widnes, WA8 6JS
0151 420 4055
widnes.sales@adamsea.co.uk

Adams is a trading name of Adams Sales Ltd.
Registered office 53 Albert Road, Widnes, WA8 6JS.
VAT Registration No. 582 2476 27. Registered in England No. 05232172