



# Lindi Avenue, Grappenhall, WA4 2SJ

Offers Over £400,000

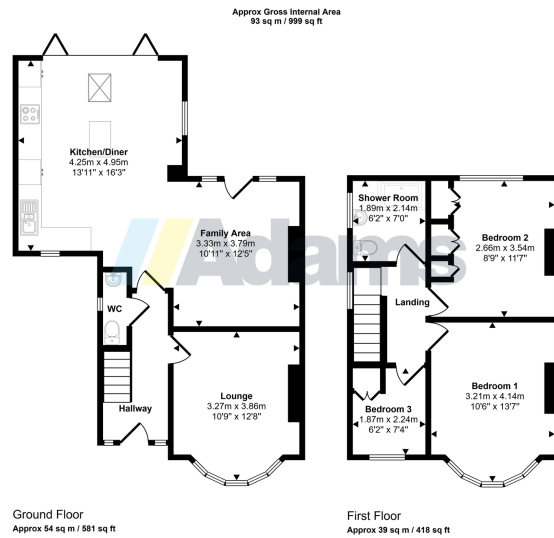
🛏️ 3 🚗 1 🚗 2



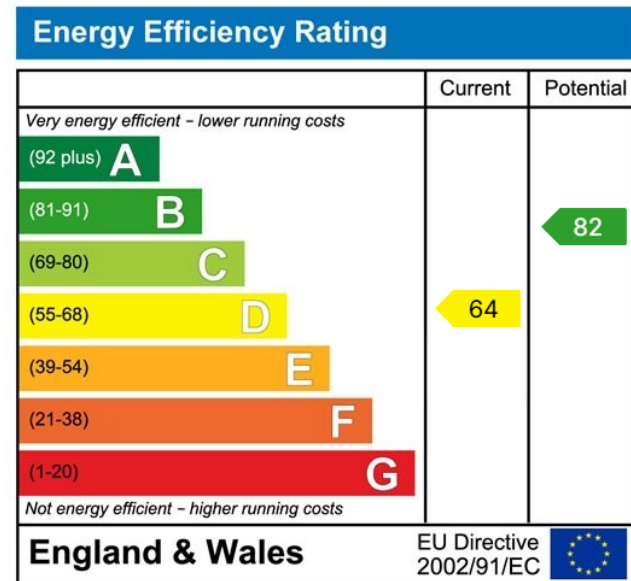
- Three Bedroom
- Semi-Detached
- Extended Ground Floor
- Open Plan Living Space
- Fully Refurbished
- Off Road Parking
- Enclosed Garden
- Sought After Location



Discover this beautifully modernised three-bedroom semi-detached home, finished to an exceptional standard throughout and ready for immediate occupation.



This floorplan is only for illustrative purposes and is not to scale. Measurements of rooms, doors, windows, and any items are approximate and no responsibility is taken for any error, omission or mis-statement. Icons of items such as bathroom suites are representations only and may not look like the real items. Made with Made-Snappy 360.



[www.adamsea.co.uk](http://www.adamsea.co.uk)

**RUNCORN**

54 High Street, Runcorn, WA7 1AW  
01928 574401  
runcorn.sales@adamsea.co.uk

**STOCKTON HEATH**

12-14 Walton Road, Stockton Heath, WA4 6NL  
01925 398343  
s.heath@adamsea.co.uk

**WIDNES**

53-55 Albert Road, Widnes, WA8 6JS  
0151 420 4055  
widnes.sales@adamsea.co.uk

Adams is a trading name of Adams Sales Ltd.  
Registered office 53 Albert Road, Widnes, WA8 6JS.  
VAT Registration No. 582 2476 27. Registered in England No. 05232172